

The background of the slide is a close-up photograph of water. It features a series of concentric, overlapping ripples that create a textured, shimmering effect. The water is a clear, light blue color, and the lighting highlights the individual droplets and bubbles, giving it a dynamic and fresh appearance.

# **PRESENTATION**

## Water Resources

---

Rachel Ickert, Chief Engineering Officer

# Percent of Normal Rainfall

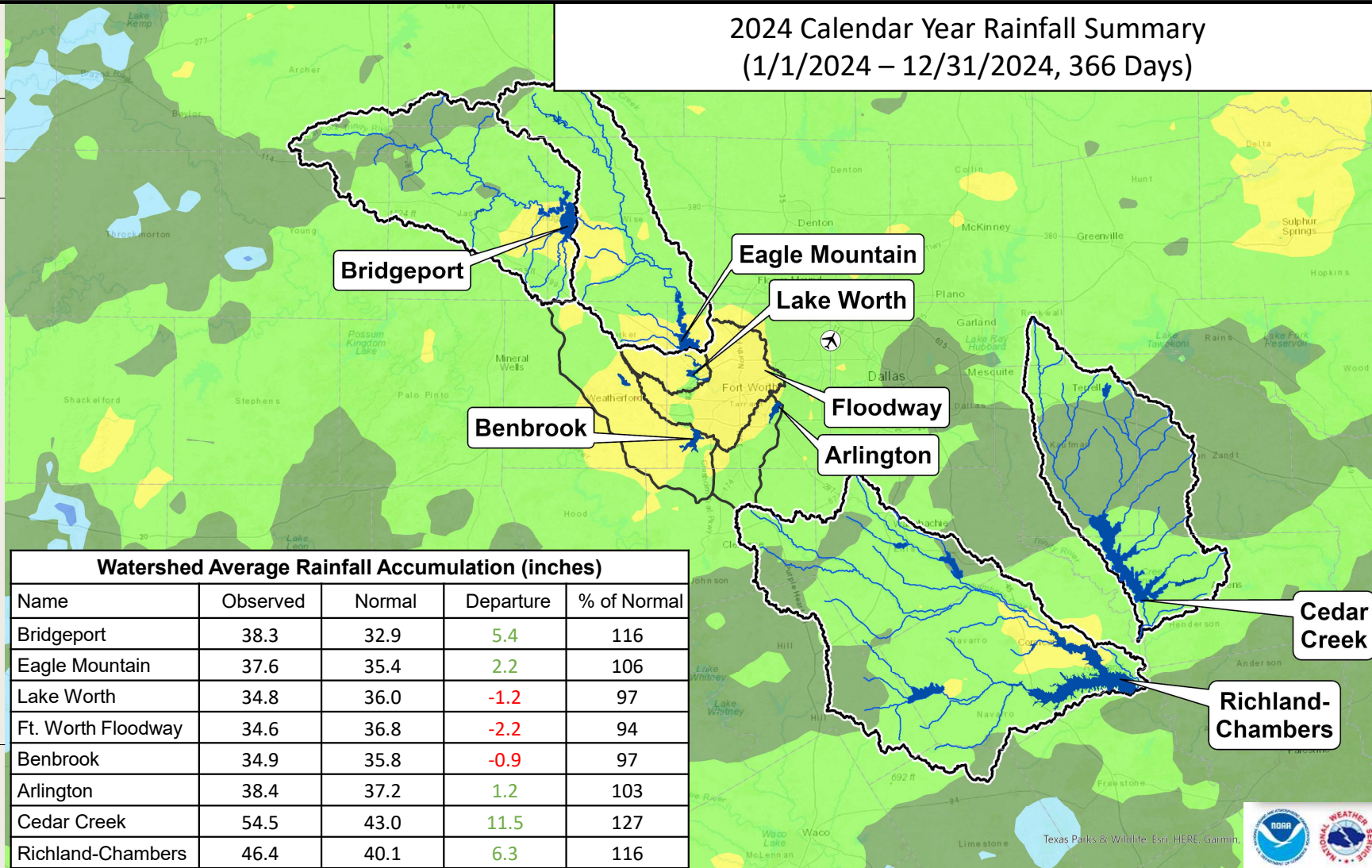


## LEGEND

- 0 - 50 %
- 50 - 75 %
- 75 - 100 %
- 100 - 125 %
- 125 - 150 %
- 150 - 175 %
- 175 - 200 %
- 200 - 225 %
- 225 - 250 %
- > 250 %

Precipitation totals are obtained from NOAA's NWS. The totals displayed are estimated by the WGRFC. The data is processed and displayed using ESRI ArcGIS.

# 2024 Calendar Year Rainfall Summary (1/1/2024 – 12/31/2024, 366 Days)



**Watershed Average Rainfall Accumulation (inches)**

Name	Observed	Normal	Departure	% of Normal
Bridgeport	38.3	32.9	5.4	116
Eagle Mountain	37.6	35.4	2.2	106
Lake Worth	34.8	36.0	-1.2	97
Ft. Worth Floodway	34.6	36.8	-2.2	94
Benbrook	34.9	35.8	-0.9	97
Arlington	38.4	37.2	1.2	103
Cedar Creek	54.5	43.0	11.5	127
Richland-Chambers	46.4	40.1	6.3	116



# 2024 Climate Highlights - Temperature

## Highest Average

Rank	Temperature	Year
1	69.8	2024
(tie)	69.8	2017
3	69.7	2023
4	69.3	2012
5	69.2	2016
(tie)	69.2	2006
7	68.7	2008
8	68.6	1999
9	68.5	2011
10	68.3	1998

## Highest Minimum

Rank	Temperature	Year
1	60.1	2024
2	59.5	2017
3	59.3	2023
(tie)	59.3	2016
5	58.6	2012
6	58.4	1998
7	58.1	2006
8	58.0	2007
9	57.8	1999
10	57.7	1933

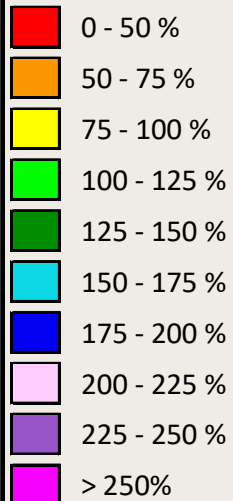
- 2024 tied for the highest temperature on average at DFW.
- 10 of 12 months were warmer than normal.
- 8 months were in the top 10 for highest minimum temperature.
- 3 months were in the top 10 for highest maximum temperatures (all in the winter or fall months).

[DFW - Monthly and Annual Top 10 Lists](#)

# Percent of Normal Rainfall

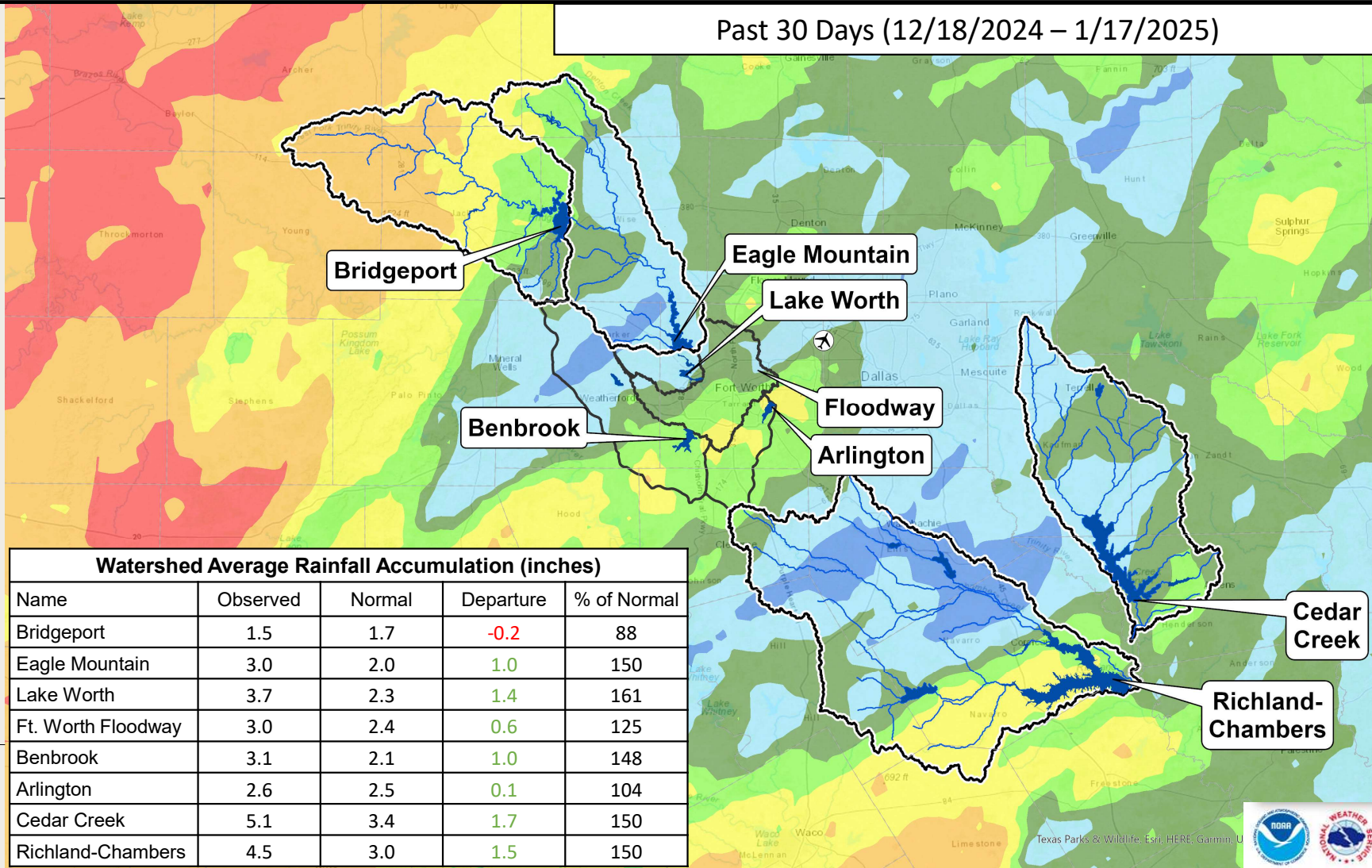


## LEGEND



Precipitation totals are obtained from NOAA's NWS. The totals displayed are estimated by the WGRFC. The data is processed and displayed using ESRI ArcGIS.

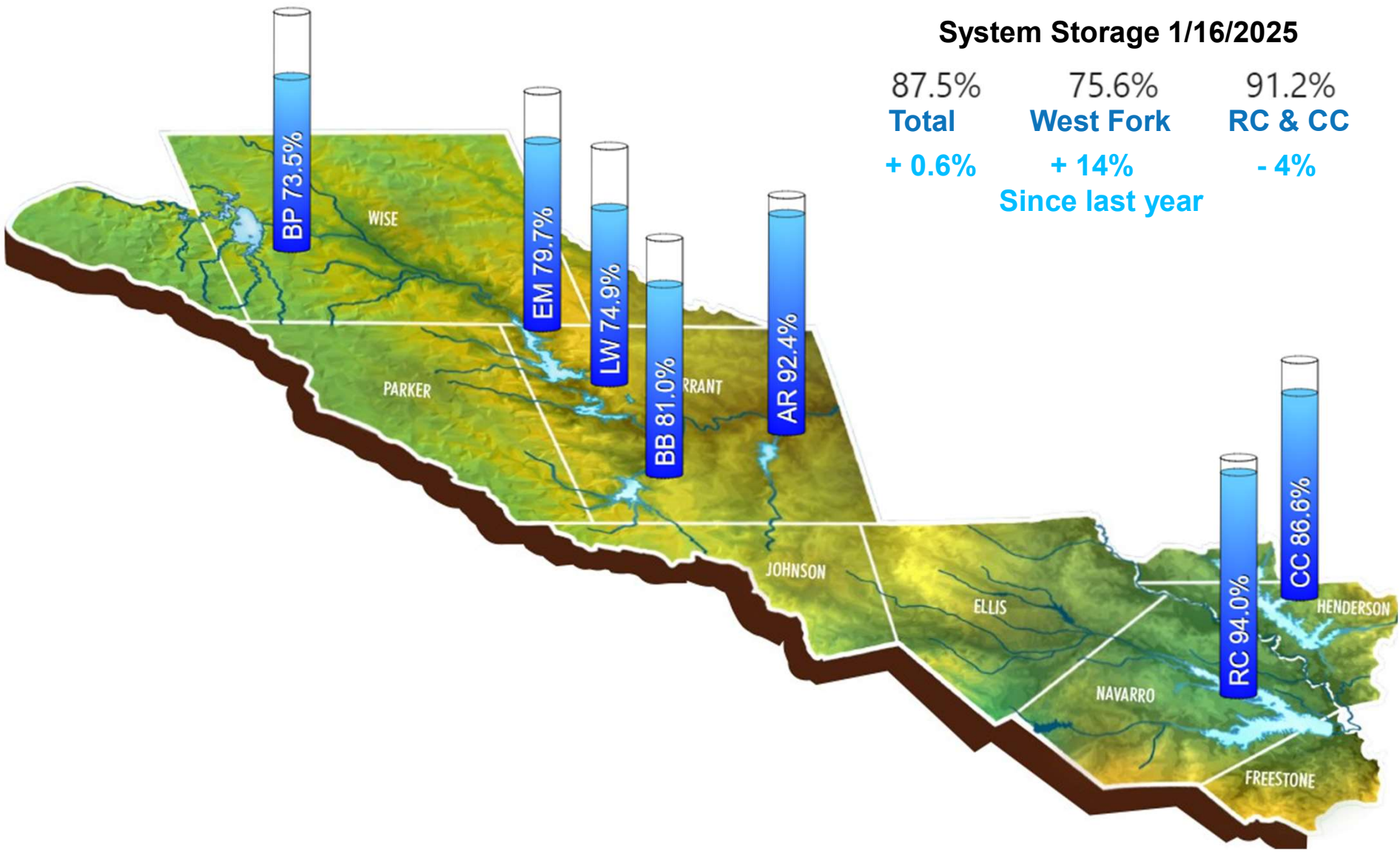
Past 30 Days (12/18/2024 – 1/17/2025)



**Watershed Average Rainfall Accumulation (inches)**

Name	Observed	Normal	Departure	% of Normal
Bridgeport	1.5	1.7	-0.2	88
Eagle Mountain	3.0	2.0	1.0	150
Lake Worth	3.7	2.3	1.4	161
Ft. Worth Floodway	3.0	2.4	0.6	125
Benbrook	3.1	2.1	1.0	148
Arlington	2.6	2.5	0.1	104
Cedar Creek	5.1	3.4	1.7	150
Richland-Chambers	4.5	3.0	1.5	150

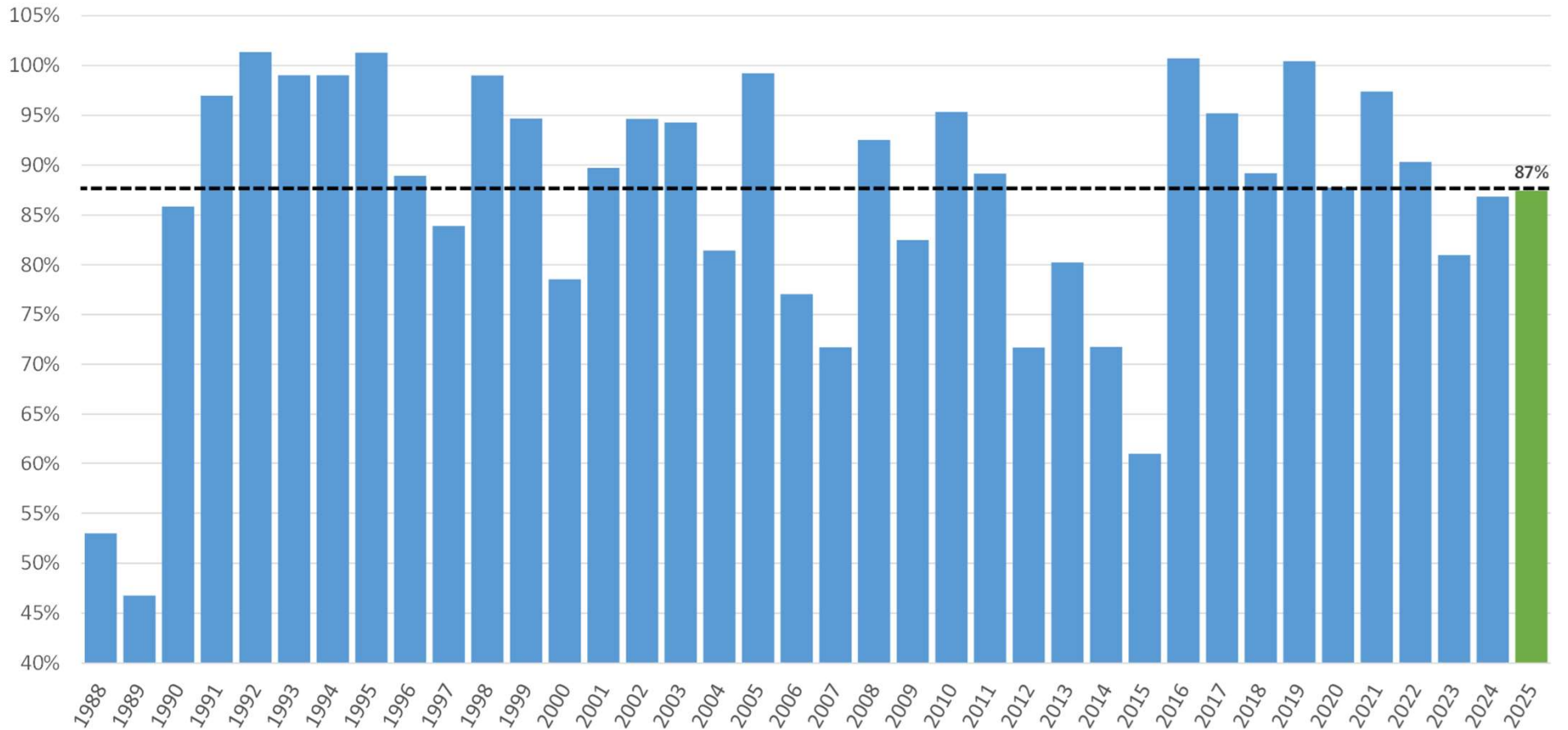




**System Storage 1/16/2025**

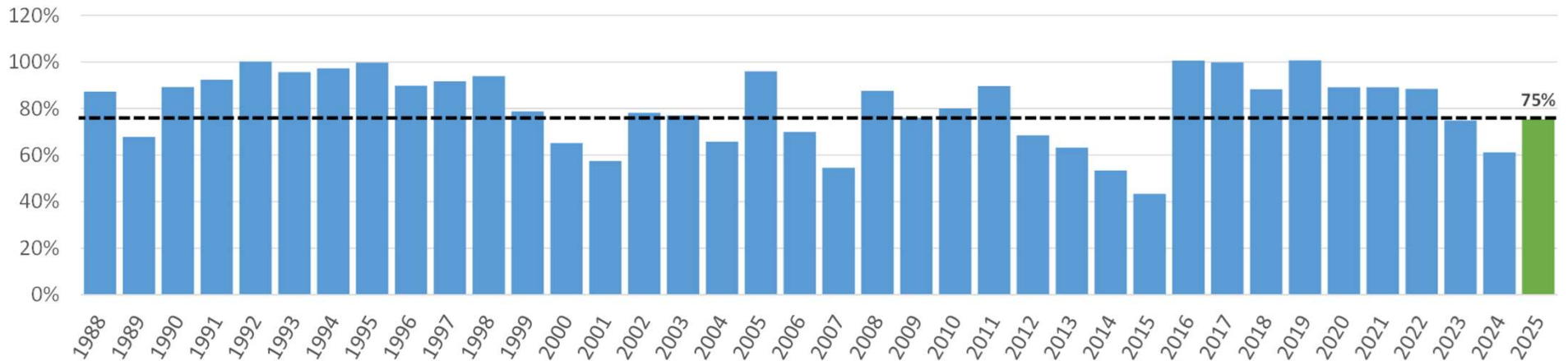
87.5%	75.6%	91.2%
<b>Total</b>	<b>West Fork</b>	<b>RC &amp; CC</b>
<b>+ 0.6%</b>	<b>+ 14%</b>	<b>- 4%</b>
<b>Since last year</b>		

# Percent of Total Storage on January 16

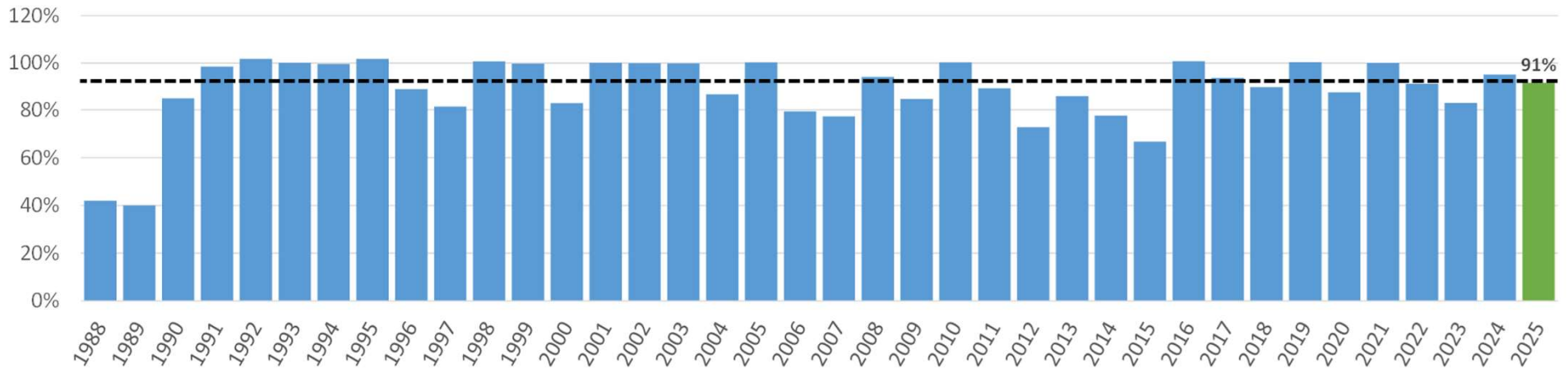


\*1988 – All four TRWD reservoirs operational

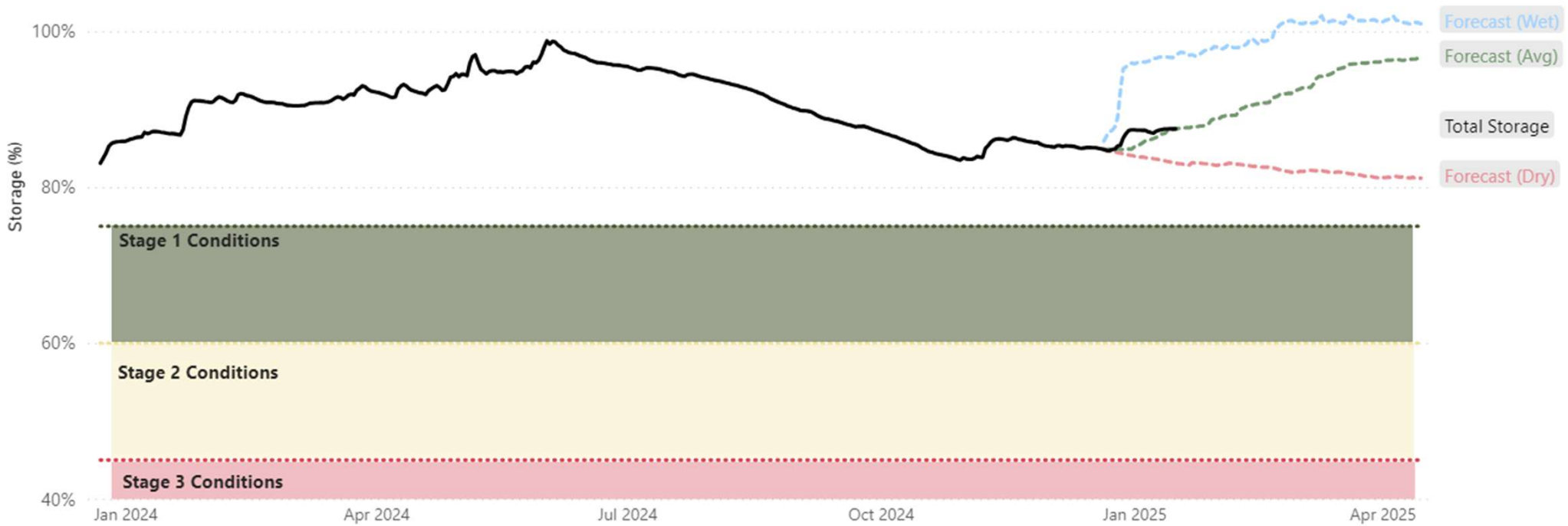
## Percent of BP+EM Storage on January 16



## Percent of CC+RC Storage on January 16



# Historic and Projected Total Water Supply Storage

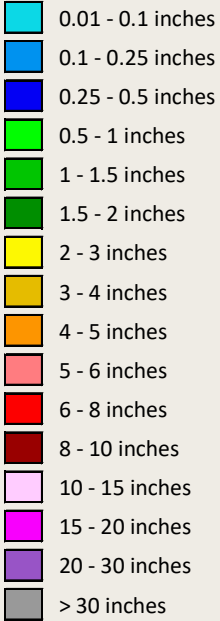




# Rainfall Forecast



## LEGEND



**Note on QPF** - QPFs depict the amount of liquid precipitation expected to fall during a specified time period in the future. Because precipitation can vary significantly over short distances, QPFs are reported as the expected "areal average" on a 20-kilometer (12.4 mile) grid. Several factors contribute to QPF estimates, including the current state of the atmosphere, modeled pressure systems, satellite trends, and manual adjustments made by forecasters.

22JAN2025 (WED) - 26JAN2025 (SUN) Duration: 5 Days

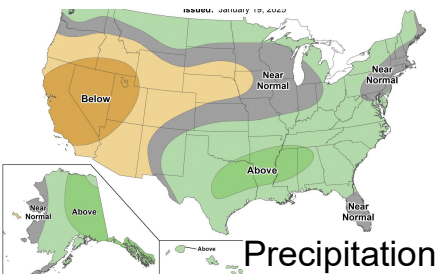
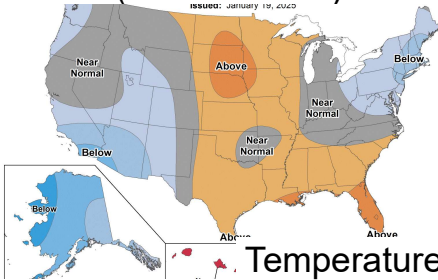


## Main Takeaway

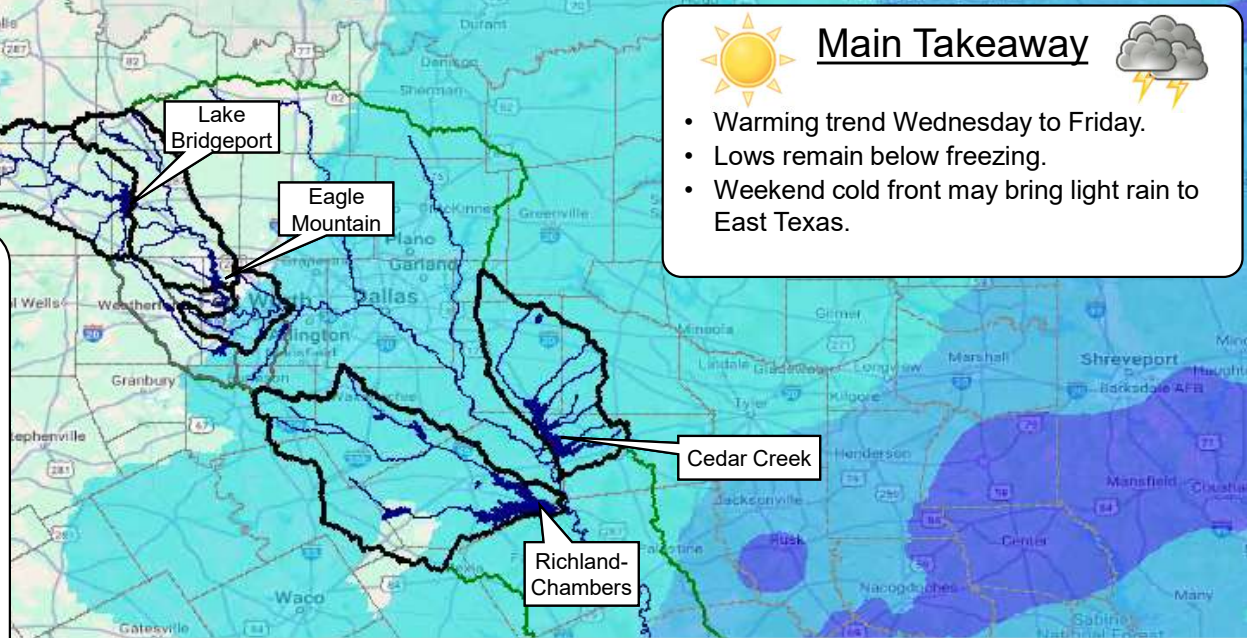


- Warming trend Wednesday to Friday.
- Lows remain below freezing.
- Weekend cold front may bring light rain to East Texas.

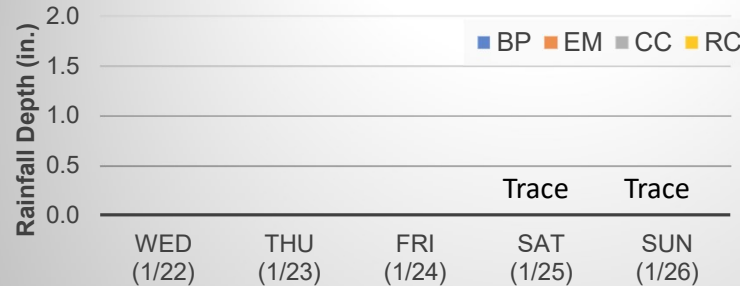
### 8 to 14 Day Outlook Above normal temperatures and above normal precipitation. (Jan 27 – Feb 2)



Precipitation forecast is obtained from NOAA's NWS and provided by the Weather Prediction Center (WPC). The data is processed and displayed using USACE Met-Vue software



### Daily Forecasted Rainfall Totals



Reservoir	Forecast Total (in.)
BP	0.0
EM	0.0
CC	Trace
RC	Trace

NWS Forecast Time: 2025-01-20 1200 GMT

