

The background of the slide is a close-up photograph of water. It features a large, circular ripple pattern on the left side that transitions into a dense field of smaller, overlapping ripples and bubbles on the right. The water is clear and bright, with a light blue tint. The lighting creates highlights and shadows on the water's surface, giving it a textured, three-dimensional appearance.

PRESENTATION

Water Resources and Planning

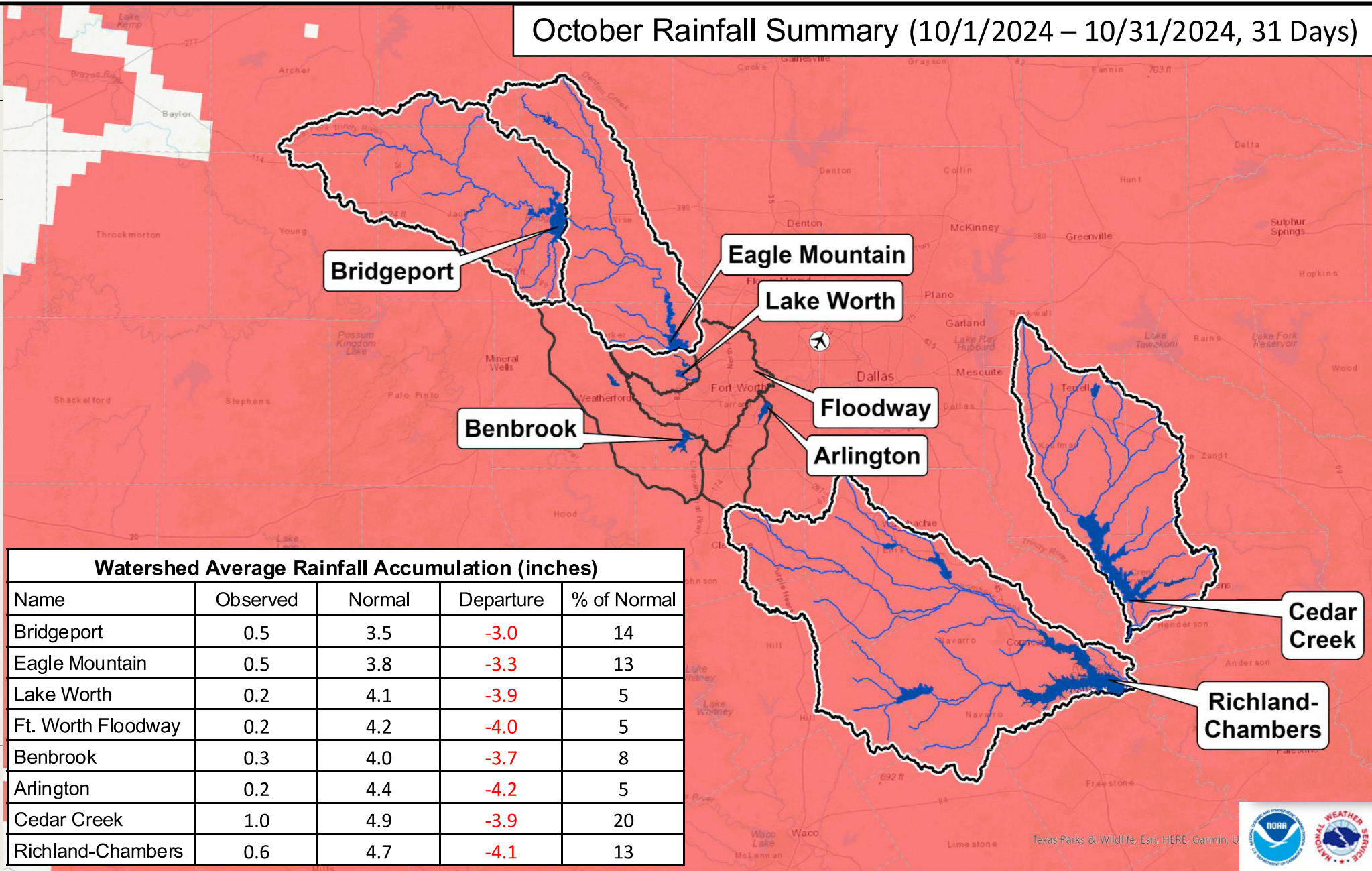
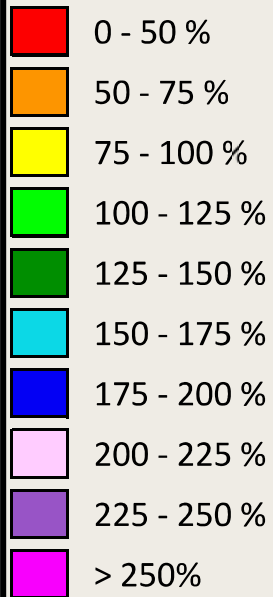
Rachel Ickert, *Chief Water Resources Officer*

October Rainfall Summary (10/1/2024 – 10/31/2024, 31 Days)

Percent of Normal Rainfall



LEGEND



| Watershed Average Rainfall Accumulation (inches) | | | | |
|--------------------------------------------------|----------|--------|-----------|-------------|
| Name | Observed | Normal | Departure | % of Normal |
| Bridgeport | 0.5 | 3.5 | -3.0 | 14 |
| Eagle Mountain | 0.5 | 3.8 | -3.3 | 13 |
| Lake Worth | 0.2 | 4.1 | -3.9 | 5 |
| Ft. Worth Floodway | 0.2 | 4.2 | -4.0 | 5 |
| Benbrook | 0.3 | 4.0 | -3.7 | 8 |
| Arlington | 0.2 | 4.4 | -4.2 | 5 |
| Cedar Creek | 1.0 | 4.9 | -3.9 | 20 |
| Richland-Chambers | 0.6 | 4.7 | -4.1 | 13 |

Precipitation totals are obtained from NOAA's NWS. The totals displayed are estimated by the WGRFC. The data is processed and displayed using ESRI ArcGIS.

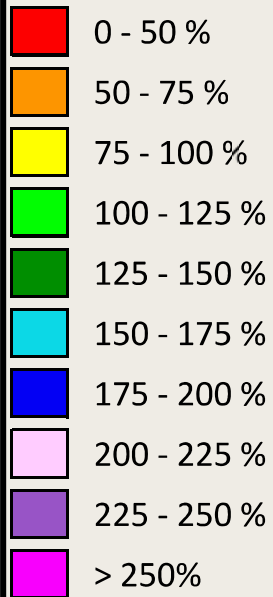


Texas Parks & Wildlife, Esri, HERE, Garmin, U

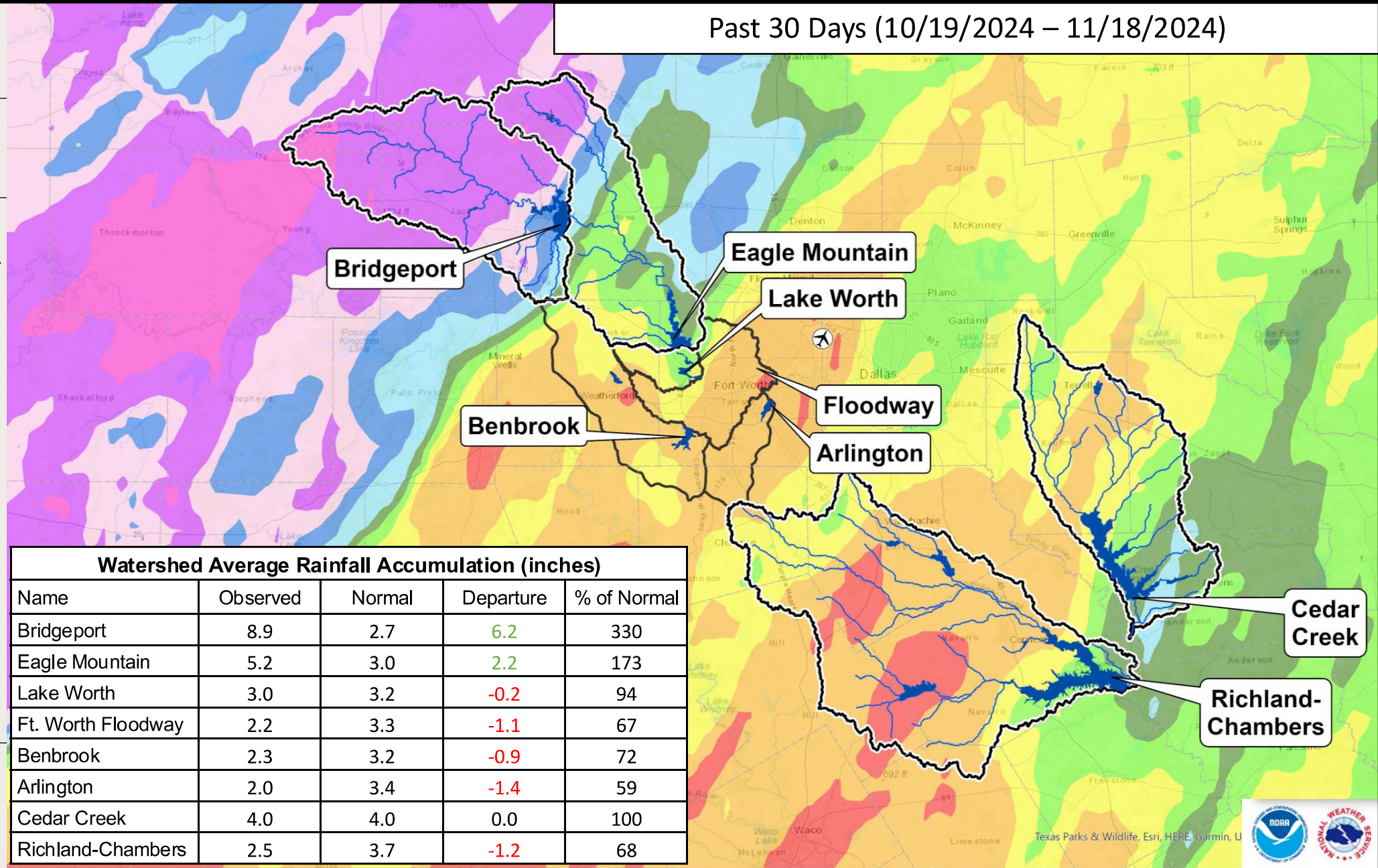
Percent of Normal Rainfall



LEGEND



Past 30 Days (10/19/2024 – 11/18/2024)



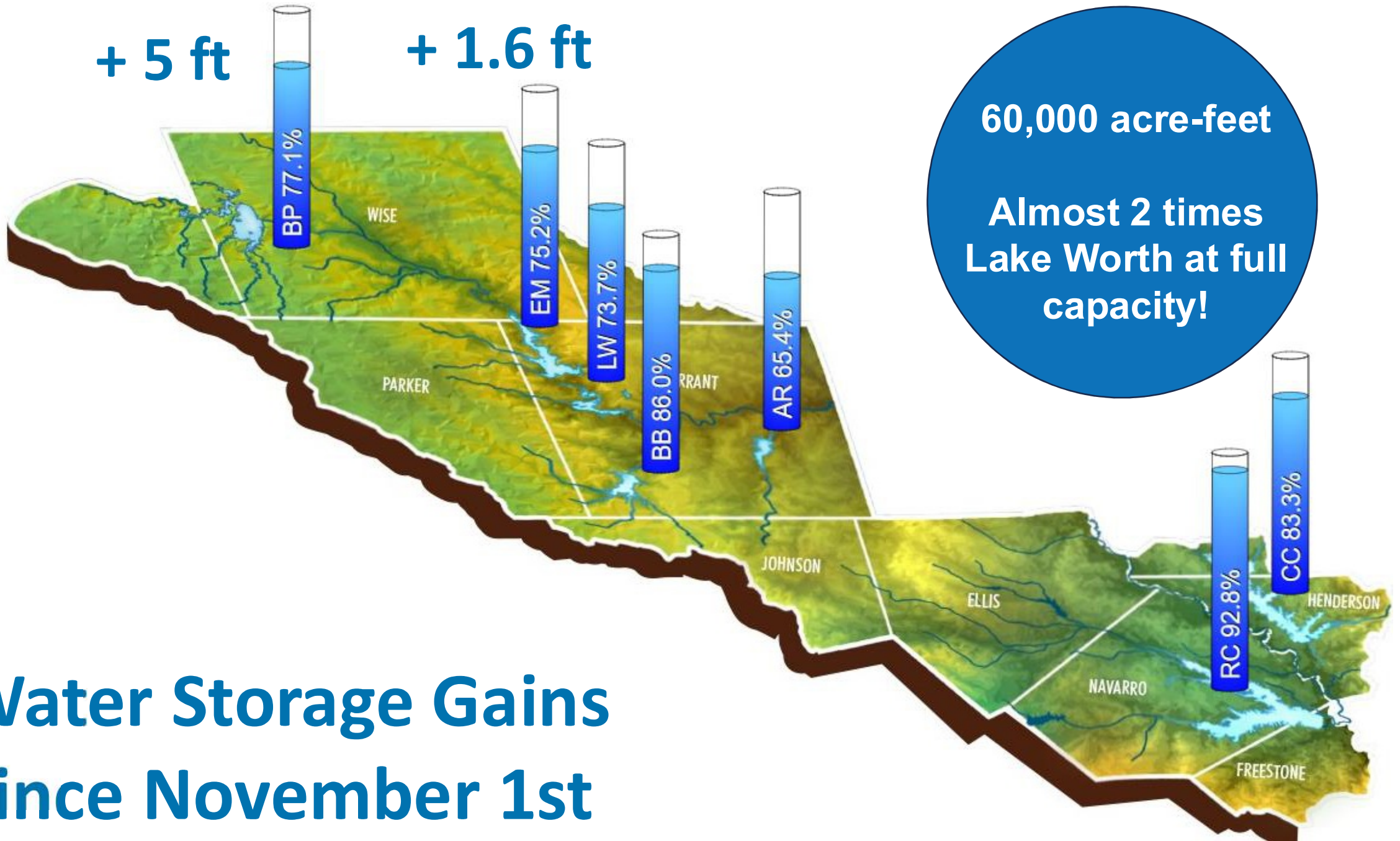
| Watershed Average Rainfall Accumulation (inches) | | | | |
|--------------------------------------------------|----------|--------|-----------|-------------|
| Name | Observed | Normal | Departure | % of Normal |
| Bridgeport | 8.9 | 2.7 | 6.2 | 330 |
| Eagle Mountain | 5.2 | 3.0 | 2.2 | 173 |
| Lake Worth | 3.0 | 3.2 | -0.2 | 94 |
| Ft. Worth Floodway | 2.2 | 3.3 | -1.1 | 67 |
| Benbrook | 2.3 | 3.2 | -0.9 | 72 |
| Arlington | 2.0 | 3.4 | -1.4 | 59 |
| Cedar Creek | 4.0 | 4.0 | 0.0 | 100 |
| Richland-Chambers | 2.5 | 3.7 | -1.2 | 68 |

Precipitation totals are obtained from NOAA's NWS. The totals displayed are estimated by the WGRFC. The data is processed and displayed using ESRI ArcGIS.



+ 5 ft

+ 1.6 ft

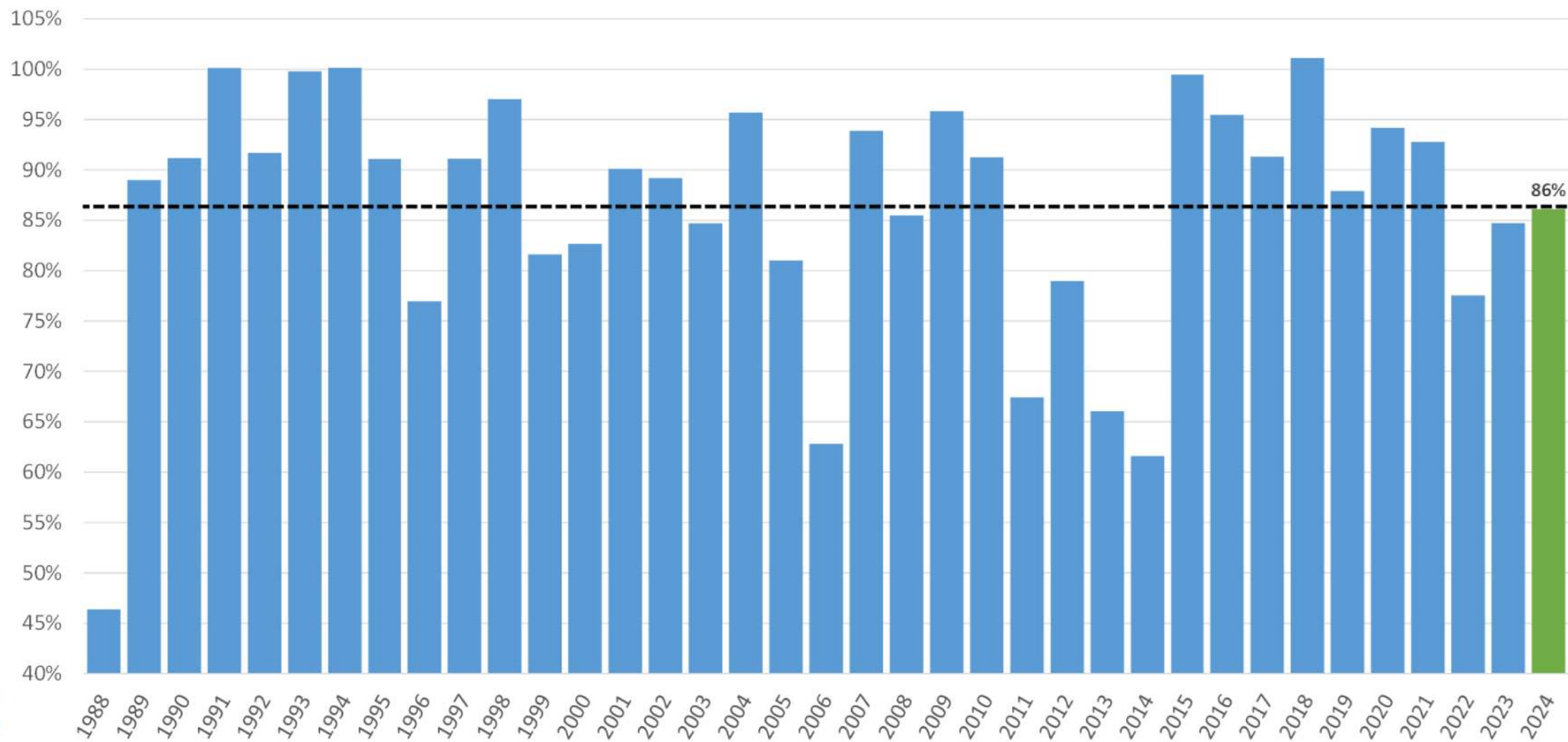


60,000 acre-feet

Almost 2 times
Lake Worth at full
capacity!

Water Storage Gains Since November 1st

Percent of Total Storage on November 17



*1988 – All four TRWD reservoirs operational

Historic and Projected Total Water Supply Storage

