

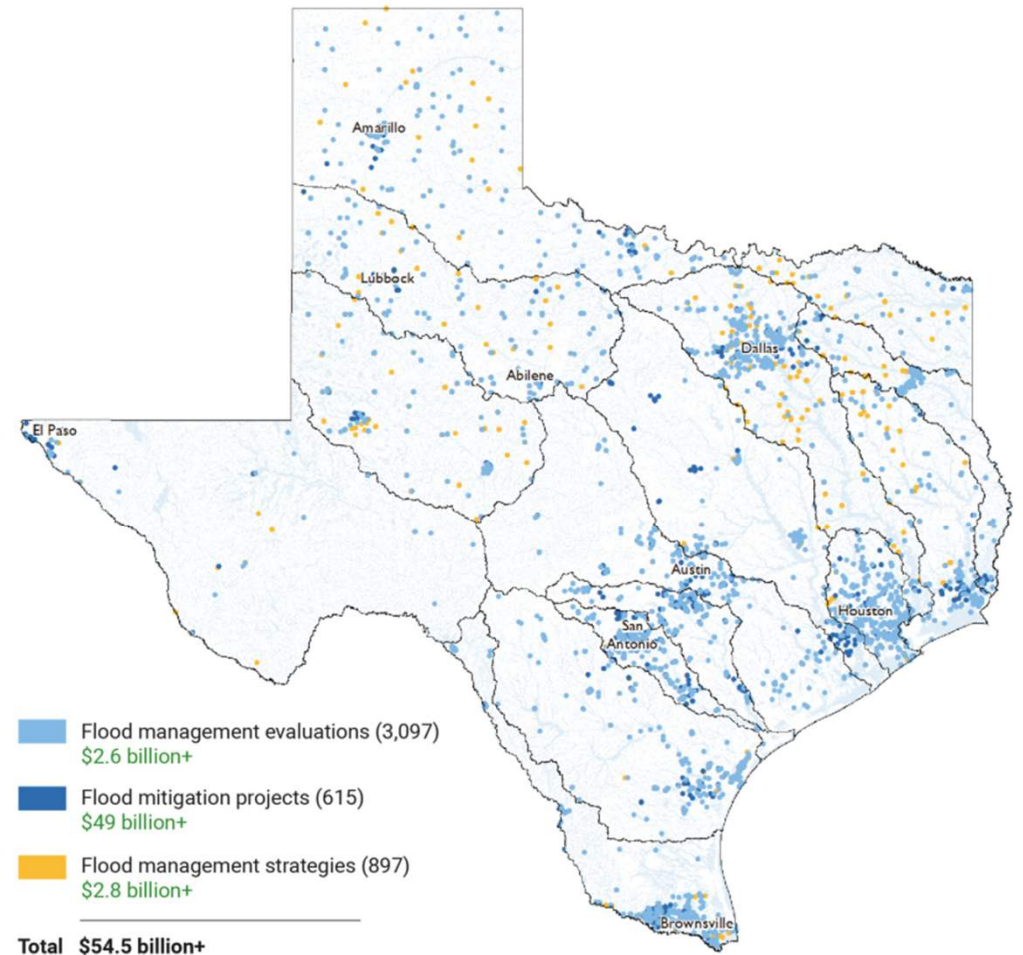
The background of the slide is a close-up photograph of water. It shows a series of concentric ripples on the left side, transitioning into a more turbulent area on the right with many small, clear bubbles and larger, more complex water droplets. The overall color palette is various shades of light blue and cyan, with bright highlights where the water reflects light.

STAFF UPDATE

Water Resources and Planning Update

Rachel Ickert, *Chief Water Resources Officer*

First Texas State Flood Plan Adopted Last Week!



Percent of Normal Rainfall

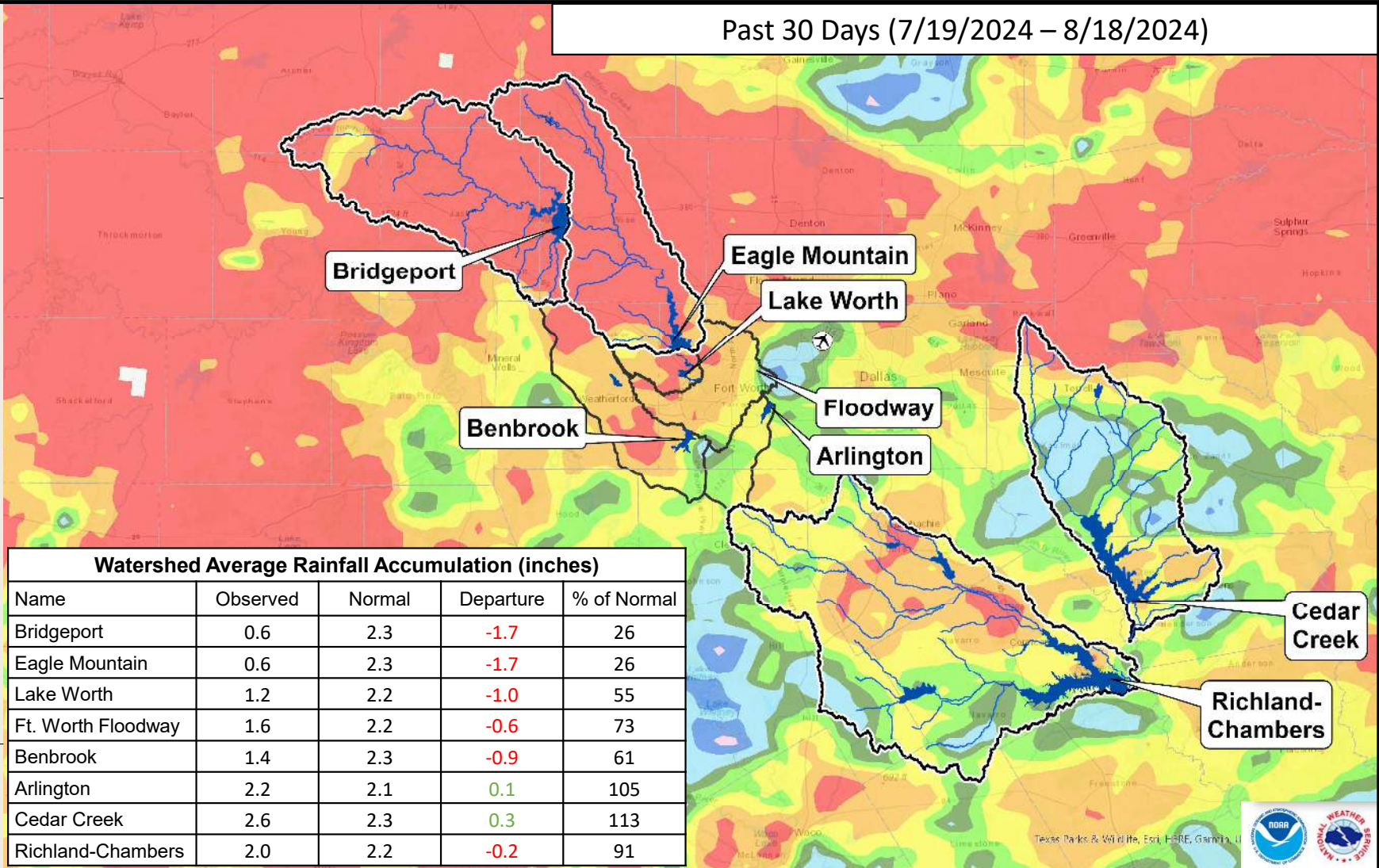


LEGEND

- 0 - 50 %
- 50 - 75 %
- 75 - 100 %
- 100 - 125 %
- 125 - 150 %
- 150 - 175 %
- 175 - 200 %
- 200 - 225 %
- 225 - 250 %
- > 250%

Precipitation totals are obtained from NOAA's NWS. The totals displayed are estimated by the WGRFC. The data is processed and displayed using ESRI ArcGIS.

Past 30 Days (7/19/2024 – 8/18/2024)



Watershed Average Rainfall Accumulation (inches)

Name	Observed	Normal	Departure	% of Normal
Bridgeport	0.6	2.3	-1.7	26
Eagle Mountain	0.6	2.3	-1.7	26
Lake Worth	1.2	2.2	-1.0	55
Ft. Worth Floodway	1.6	2.2	-0.6	73
Benbrook	1.4	2.3	-0.9	61
Arlington	2.2	2.1	0.1	105
Cedar Creek	2.6	2.3	0.3	113
Richland-Chambers	2.0	2.2	-0.2	91



Percent of Normal Rainfall

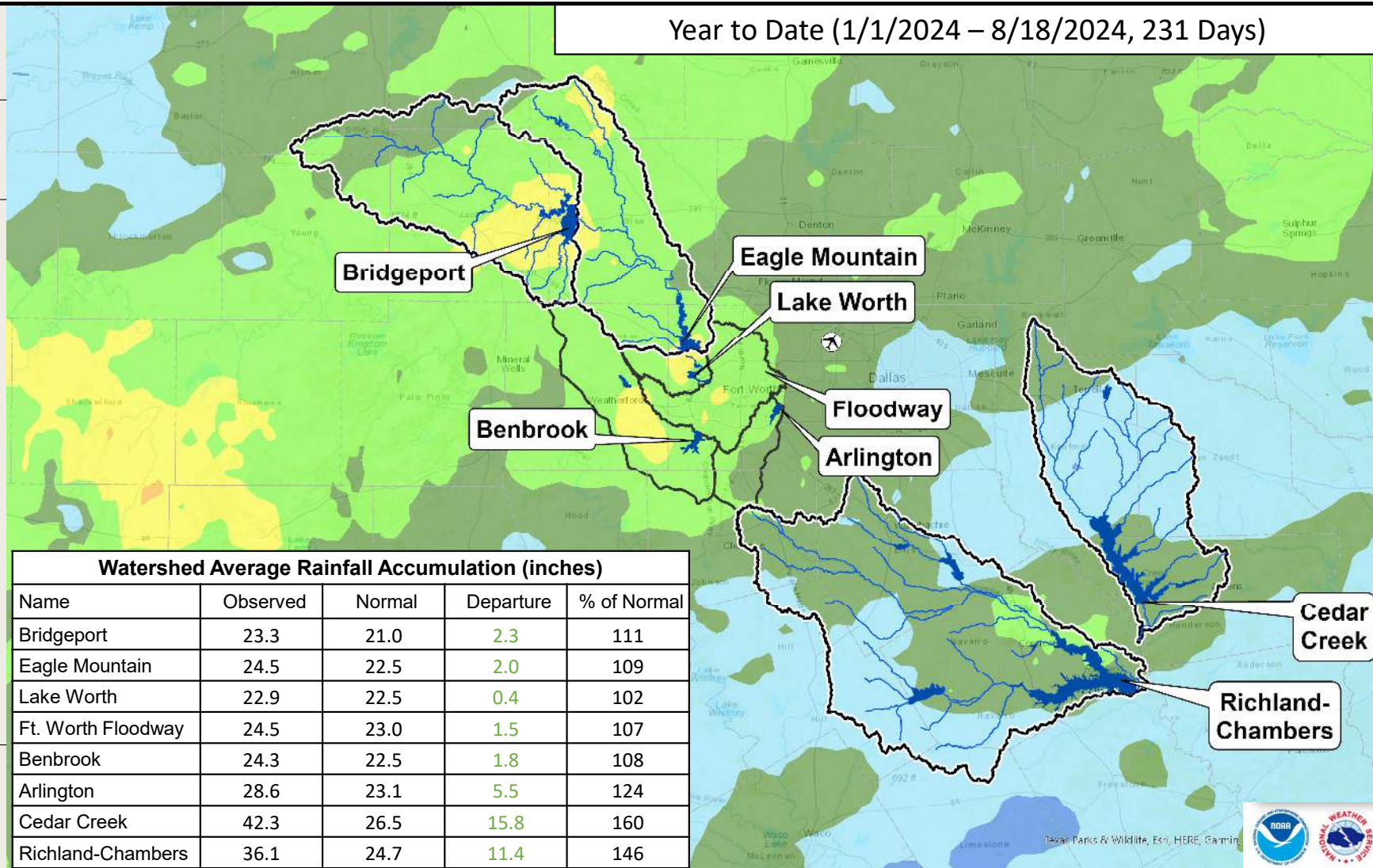


LEGEND

- 0 - 50 %
- 50 - 75 %
- 75 - 100 %
- 100 - 125 %
- 125 - 150 %
- 150 - 175 %
- 175 - 200 %
- 200 - 225 %
- 225 - 250 %
- > 250%

Precipitation totals are obtained from NOAA's NWS. The totals displayed are estimated by the WGRFC. The data is processed and displayed using ESRI ArcGIS.

Year to Date (1/1/2024 – 8/18/2024, 231 Days)



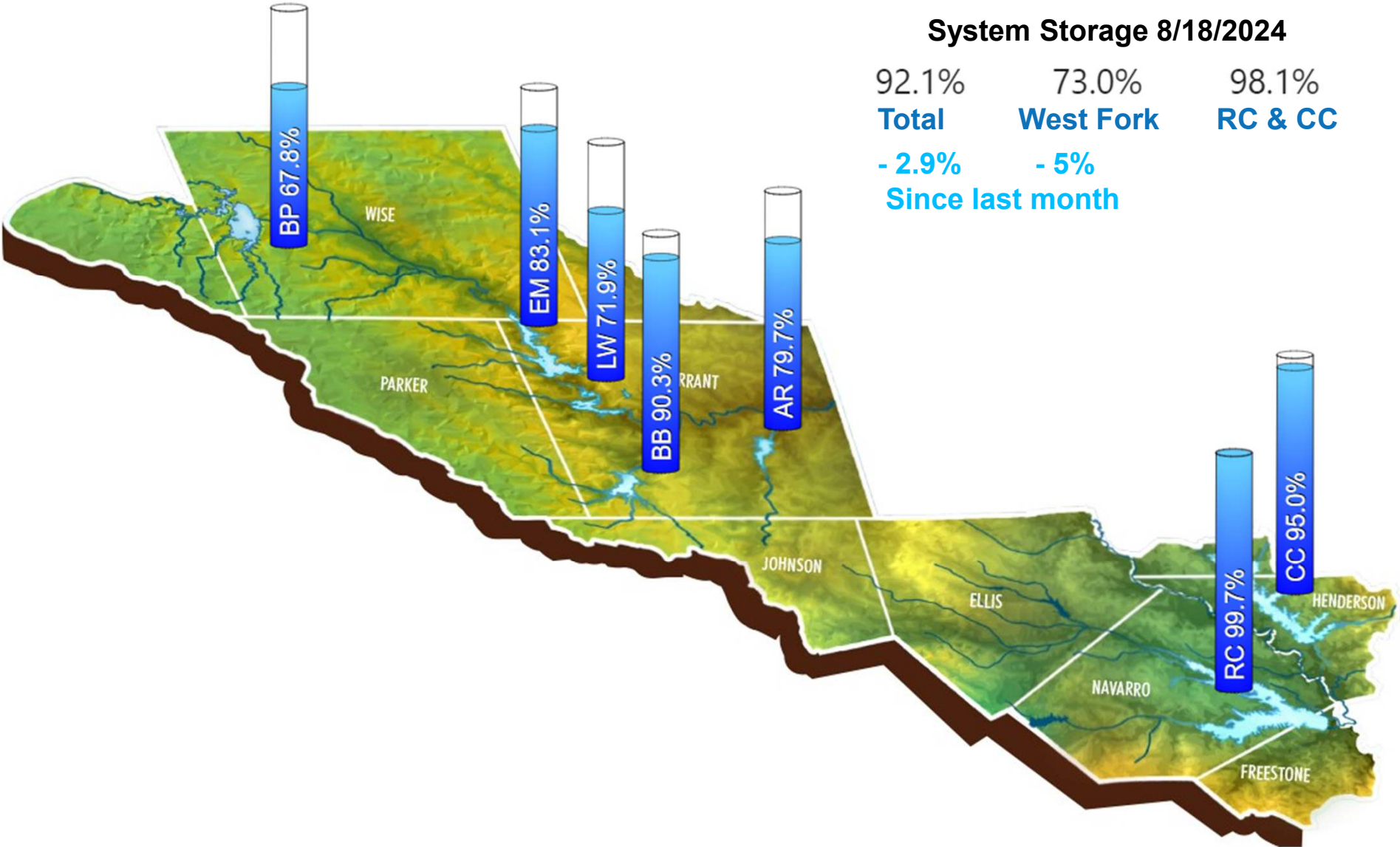
Watershed Average Rainfall Accumulation (inches)

Name	Observed	Normal	Departure	% of Normal
Bridgeport	23.3	21.0	2.3	111
Eagle Mountain	24.5	22.5	2.0	109
Lake Worth	22.9	22.5	0.4	102
Ft. Worth Floodway	24.5	23.0	1.5	107
Benbrook	24.3	22.5	1.8	108
Arlington	28.6	23.1	5.5	124
Cedar Creek	42.3	26.5	15.8	160
Richland-Chambers	36.1	24.7	11.4	146

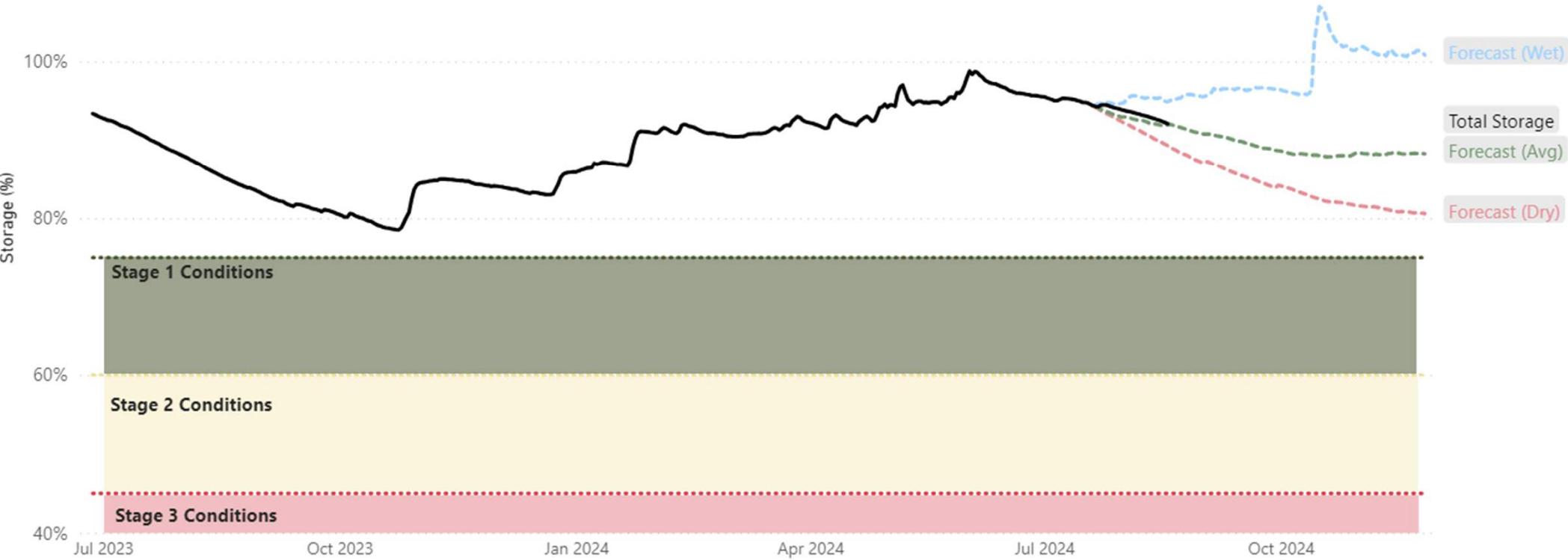


System Storage 8/18/2024

92.1% 73.0% 98.1%
Total **West Fork** **RC & CC**
- 2.9% **- 5%**
Since last month

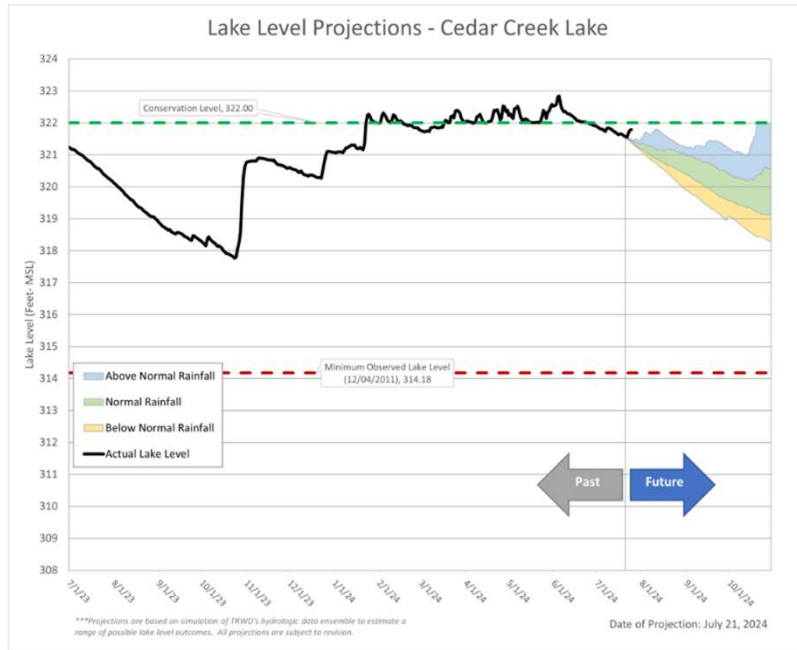


Historic and Projected Total Water Supply Storage



Lake Level Blog: www.trwd.com/lake-level-blog
Water Conservation: www.savetarrantwater.com

Cedar Creek Lake



SAVE TARRANT WATER
Water Conservation

WHAT WE DO

SAVE TARRANT WATER

GUIDE TO
TEXAS
Home Landscaping
FREE ONLINE CLASS SERIES

trwd

SAVE TARRANT WATER.COM