

The background of the slide is a close-up photograph of water. It features a series of concentric, overlapping ripples that create a textured, shimmering effect. The water is a clear, light blue color, and the lighting highlights the individual droplets and bubbles, giving it a dynamic and fresh appearance.

STAFF UPDATE

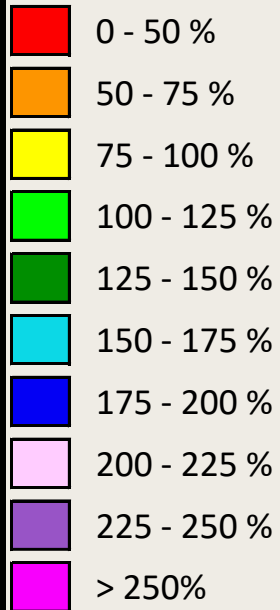
Water Resources and Planning Update

Rachel Ickert, *Chief Water Resources Officer*

Percent of Normal Rainfall

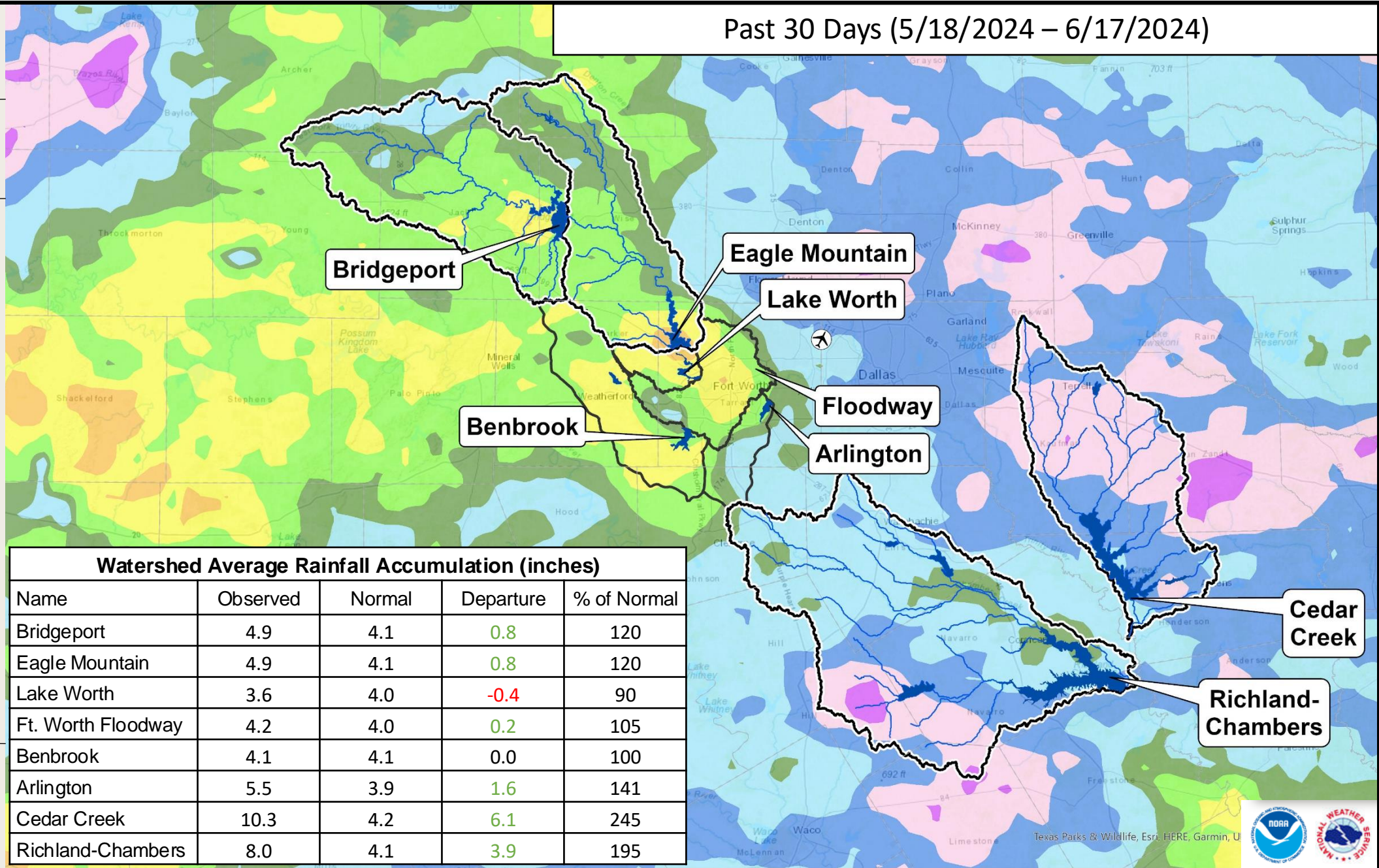


LEGEND



Precipitation totals are obtained from NOAA's NWS. The totals displayed are estimated by the WGRFC. The data is processed and displayed using ESRI ArcGIS.

Past 30 Days (5/18/2024 – 6/17/2024)



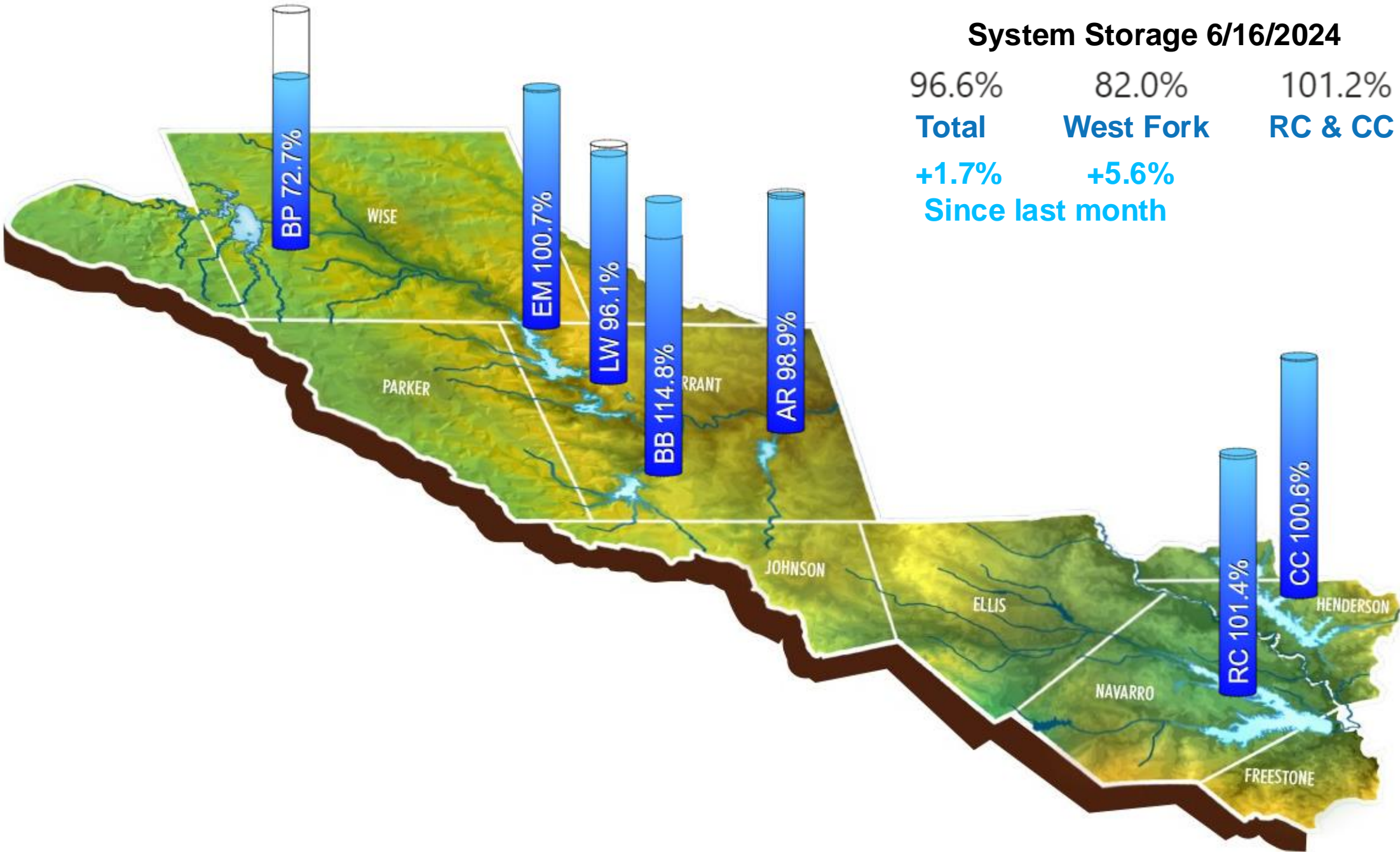
Watershed Average Rainfall Accumulation (inches)				
Name	Observed	Normal	Departure	% of Normal
Bridgeport	4.9	4.1	0.8	120
Eagle Mountain	4.9	4.1	0.8	120
Lake Worth	3.6	4.0	-0.4	90
Ft. Worth Floodway	4.2	4.0	0.2	105
Benbrook	4.1	4.1	0.0	100
Arlington	5.5	3.9	1.6	141
Cedar Creek	10.3	4.2	6.1	245
Richland-Chambers	8.0	4.1	3.9	195

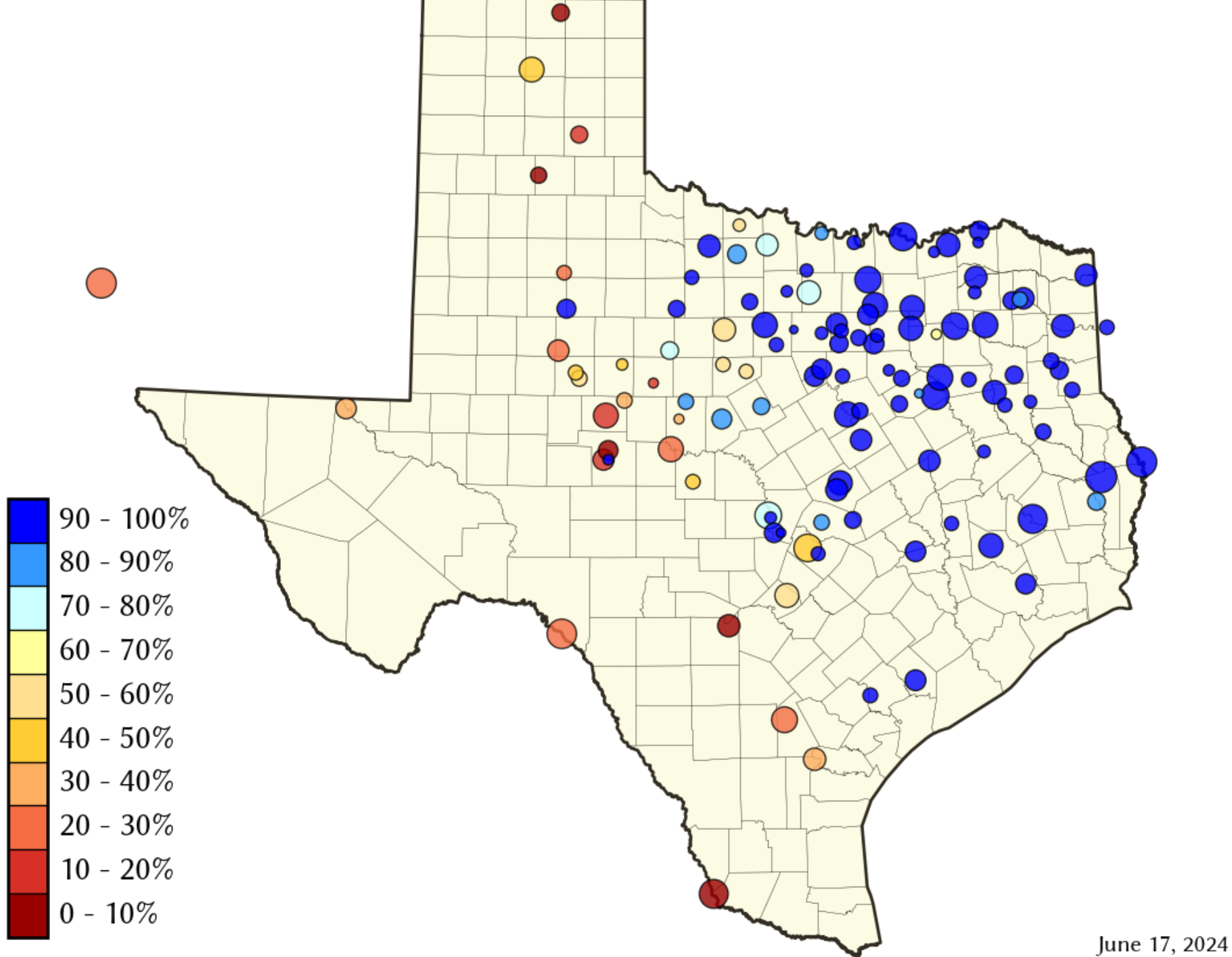


Texas Parks & Wildlife, Esri, HERE, Garmin, U

System Storage 6/16/2024

96.6% 82.0% 101.2%
Total **West Fork** **RC & CC**
+1.7% **+5.6%**
Since last month





Historic and Projected Total Water Supply Storage

