

The background of the slide is a close-up photograph of water. It features a series of concentric, overlapping ripples that create a textured, shimmering effect. The water is a clear, light blue color, and the lighting highlights the individual droplets and bubbles, giving it a sense of depth and movement.

## **STAFF UPDATE**

### Water Resources and Planning Update and Staff Awards

---

Rachel Ickert, *Chief Water Resources Officer*

# Percent of Normal Rainfall

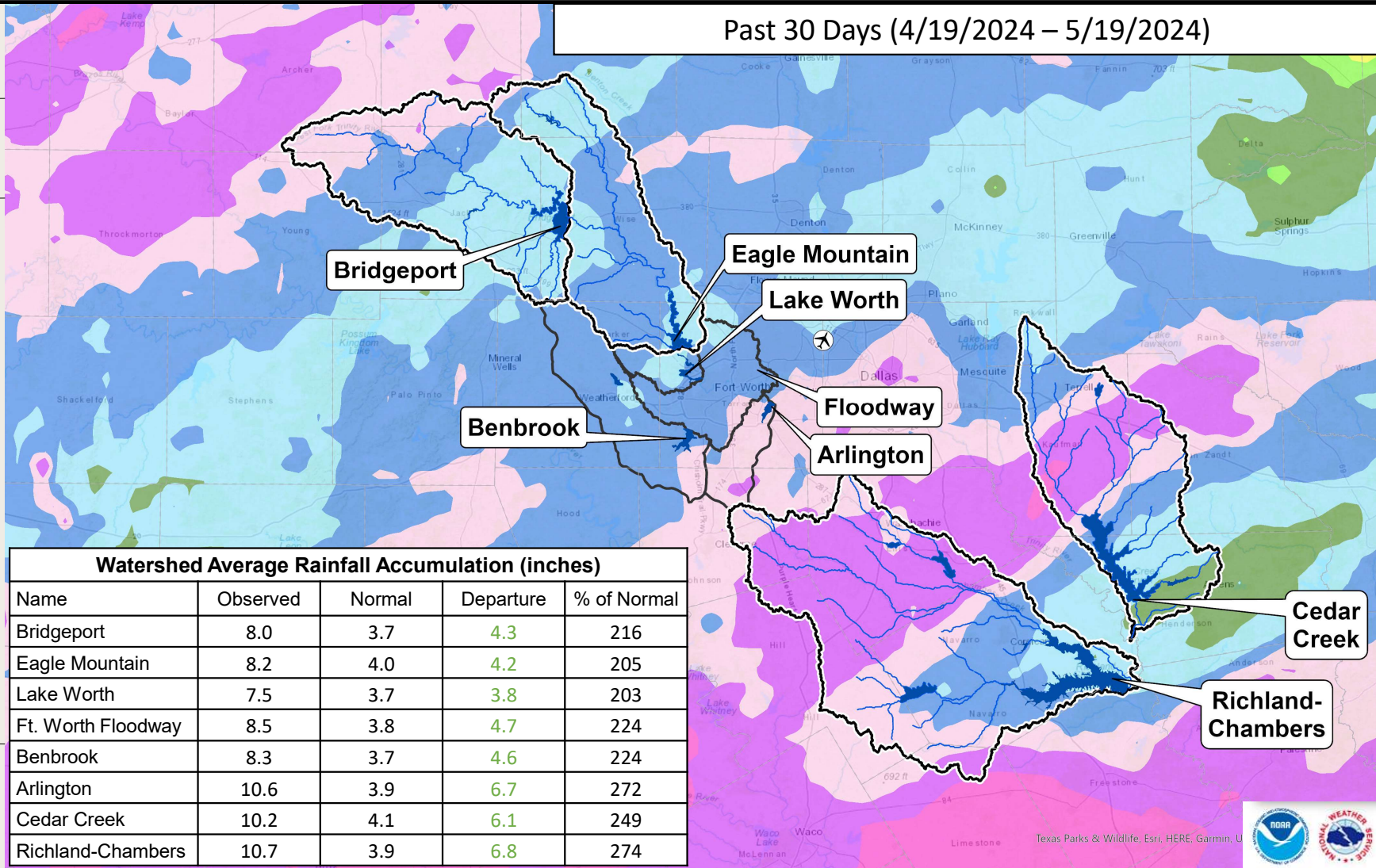


## LEGEND

- 0 - 50 %
- 50 - 75 %
- 75 - 100 %
- 100 - 125 %
- 125 - 150 %
- 150 - 175 %
- 175 - 200 %
- 200 - 225 %
- 225 - 250 %
- > 250 %

Precipitation totals are obtained from NOAA's NWS. The totals displayed are estimated by the WGRFC. The data is processed and displayed using ESRI ArcGIS.

Past 30 Days (4/19/2024 – 5/19/2024)



**Watershed Average Rainfall Accumulation (inches)**

Name	Observed	Normal	Departure	% of Normal
Bridgeport	8.0	3.7	4.3	216
Eagle Mountain	8.2	4.0	4.2	205
Lake Worth	7.5	3.7	3.8	203
Ft. Worth Floodway	8.5	3.8	4.7	224
Benbrook	8.3	3.7	4.6	224
Arlington	10.6	3.9	6.7	272
Cedar Creek	10.2	4.1	6.1	249
Richland-Chambers	10.7	3.9	6.8	274

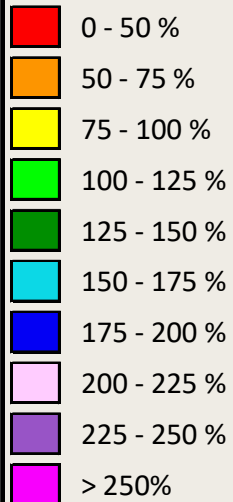




# Percent of Normal Rainfall

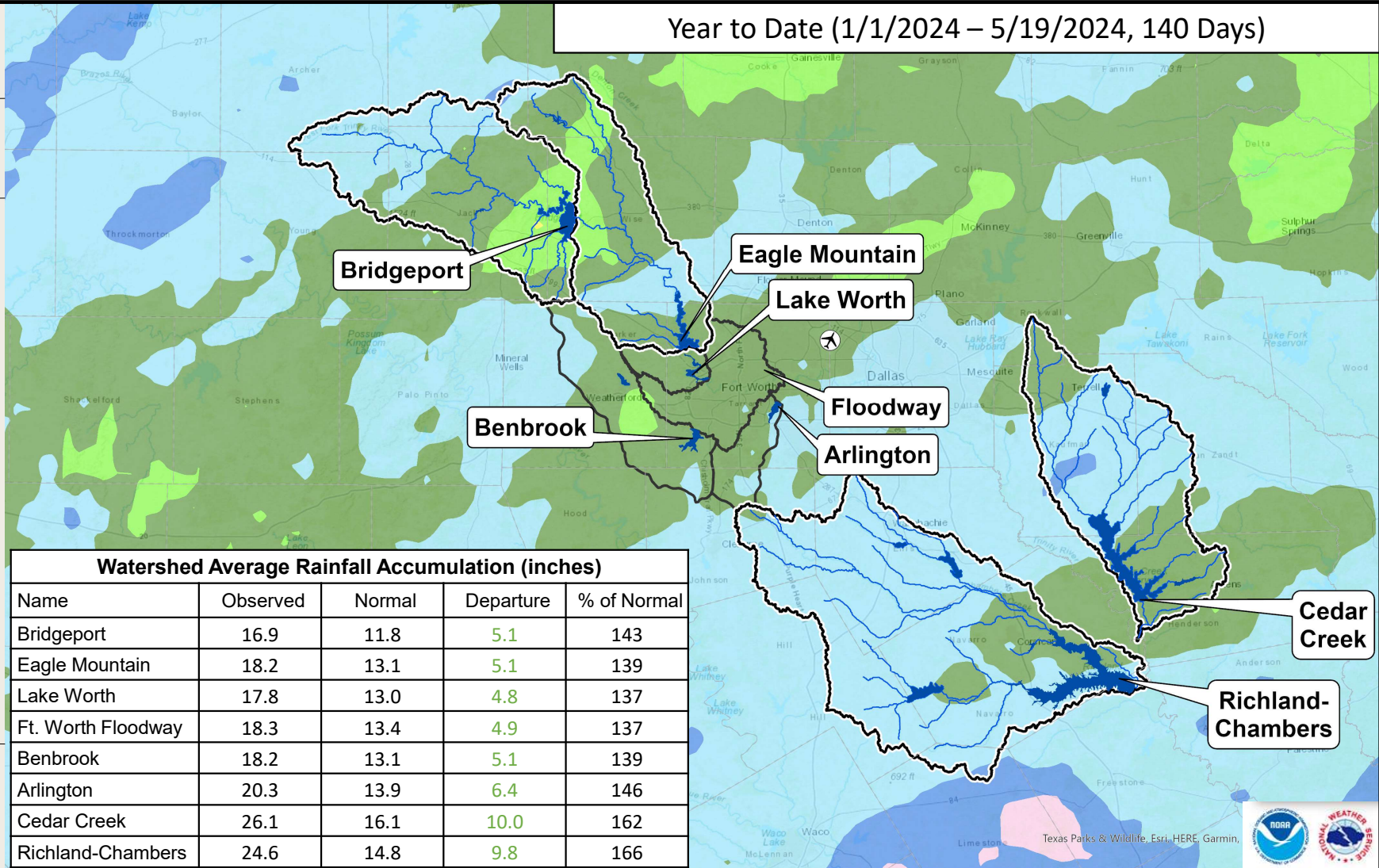


## LEGEND



Precipitation totals are obtained from NOAA's NWS. The totals displayed are estimated by the WGRFC. The data is processed and displayed using ESRI ArcGIS.

Year to Date (1/1/2024 – 5/19/2024, 140 Days)



**Watershed Average Rainfall Accumulation (inches)**

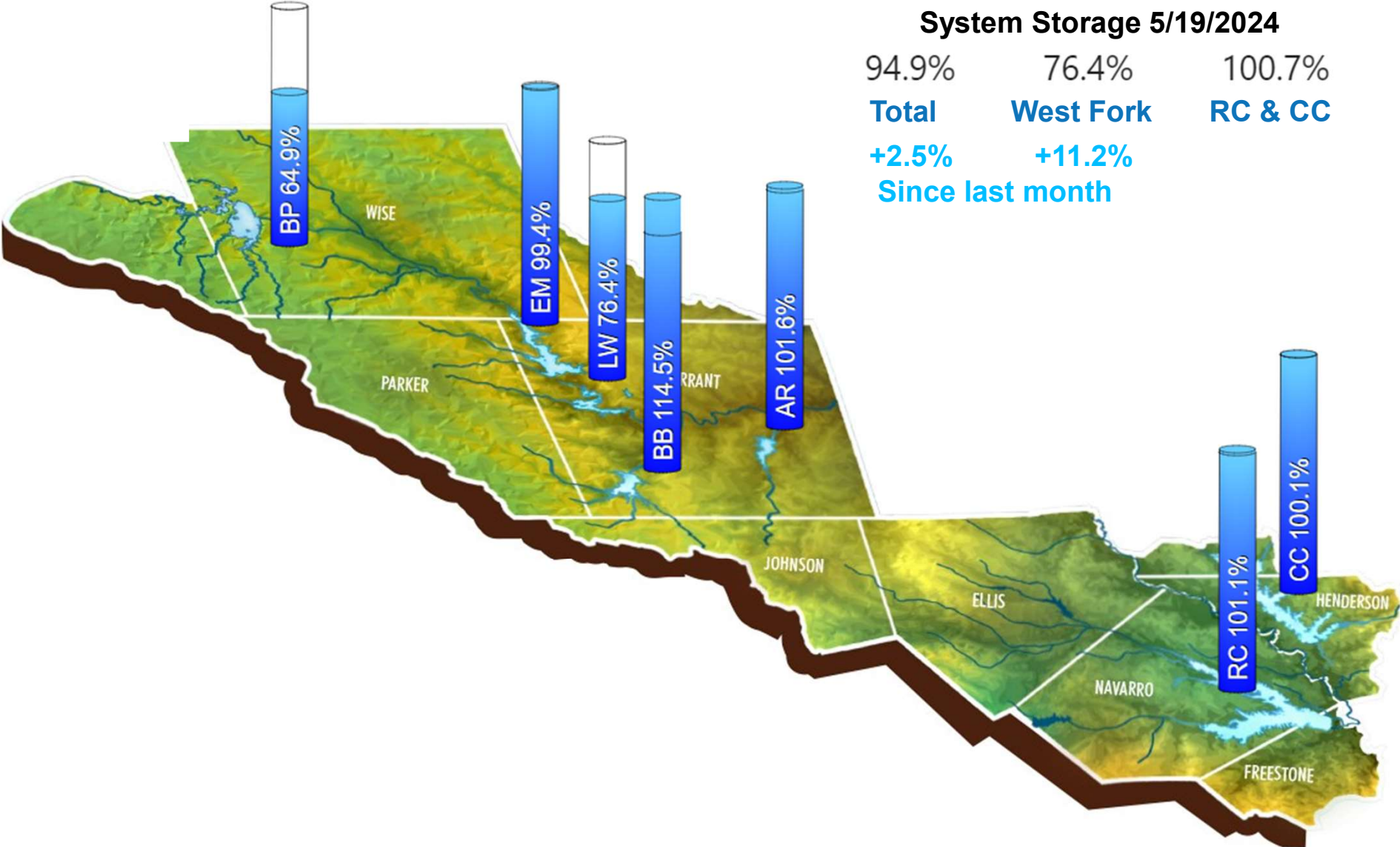
Name	Observed	Normal	Departure	% of Normal
Bridgeport	16.9	11.8	5.1	143
Eagle Mountain	18.2	13.1	5.1	139
Lake Worth	17.8	13.0	4.8	137
Ft. Worth Floodway	18.3	13.4	4.9	137
Benbrook	18.2	13.1	5.1	139
Arlington	20.3	13.9	6.4	146
Cedar Creek	26.1	16.1	10.0	162
Richland-Chambers	24.6	14.8	9.8	166



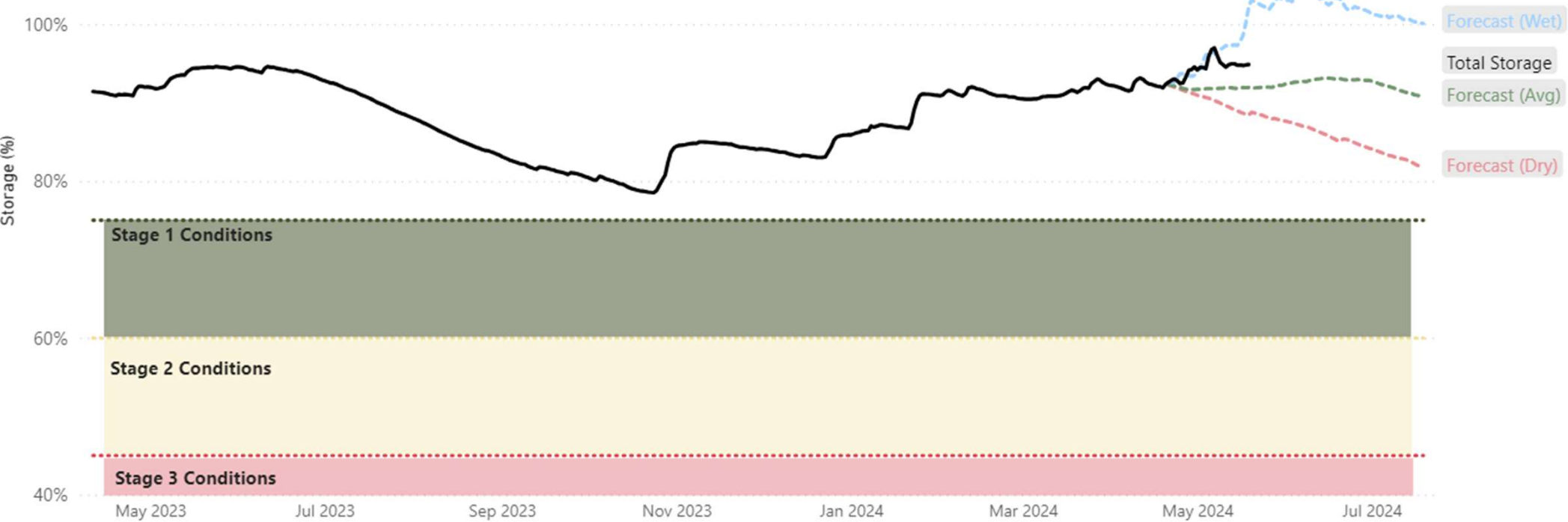
Texas Parks & Wildlife, Esri, HERE, Garmin,

**System Storage 5/19/2024**

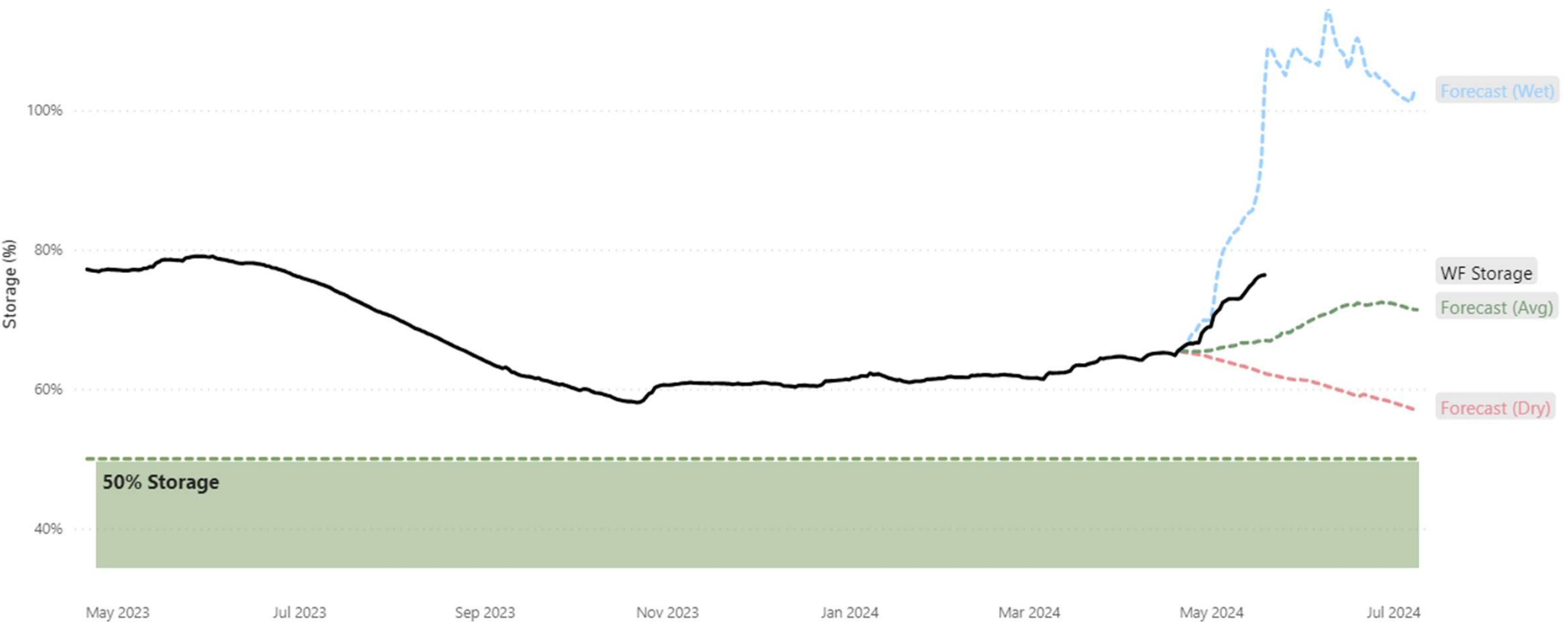
94.9%      76.4%      100.7%  
**Total**      **West Fork**      **RC & CC**  
**+2.5%**      **+11.2%**  
**Since last month**



# Historic and Projected Total Water Supply Storage



# Historic and Projected Bridgeport + Eagle Mountain Supply Storage





# Regional and State Flood Planning

